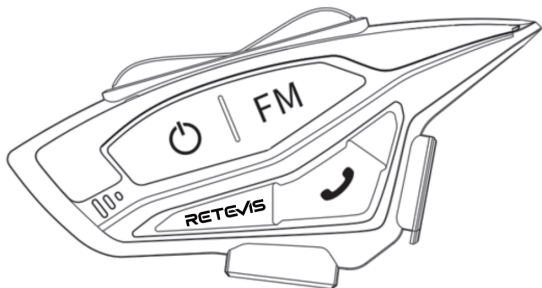


RETEVIS



EZtalk 3A Two Way Radio USER'S MANUAL

CONTENT

Introduction -----	01
PACKAGE Includes -----	01
Installation Procedure (one out of two) -----	02
Main Functions and Operations -----	05
Mobile Phone Pairing -----	07
Restore Factory Settings -----	10
Function Priority Level -----	10
Guarantee -----	17

NOTES: In order to protect the environment and save paper, please contact our customer service or scan the QR code to download the multi-language User Manual: including English, French, German, Italian, Spanish, Russian, etc.



1.Introduction

1.1 Product Overview

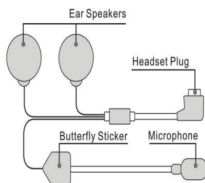
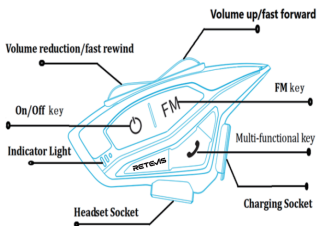
Thank you for choosing RETEVIS EZTalk 3A helmet headset. This is a helmet-mounted Bluetooth headset specially designed for motorcyclists. It integrates the function of intercom, telephone, music, FM radio, and GPS navigating voice prompts during riding. Riders now can have a clear, safe, and comfortable experience on the journey.

EZTalk 3A has a stable system operation, dual intelligent noise reduction, low power consumption, strong pickup effect, multiple device connection support, and strong compatibility. It is a fashionable compact, energy-saving, and environmentally friendly high-tech product with humanized design.

1.2 The EZTalk 3A Features:

- Intelligent DSP audio processing, CVC 12th generation noise reduction processing, 16K voice bandwidth transmission rate
- Ultra-fast connection pairing speed.
- 2-person full real-time duplex 1000m distance intercom.
- FM radio.
- Multi-language voice prompts (English,French,German)
- Phone, MP3, GPS voice transfer.
- Voice wake-up call.
- Automatic answer, support last dialed number redial
- Intelligent pickup microphone
- Simultaneous connection of 2 other devices (phone, MP3, GPS)
- Support voice communication at 120 km/speed.
- 40mm tuning speaker diaphragm, shocking music.
- IP65 waterproof.
- 900mAh battery capacity,
- Support pairing with third-party walkie talkie

2 PACKAGE Includes



Device	1
Microphone&headset	1
Velcro Clamp	1
Hook and loop fasteners	2
Card Removal Tool	1
Headphone Velcro	4
USB Cable	1
Screw Driver	1
Manual	1
Assemblage	2
Clamp	1

2.1 Applicable people:

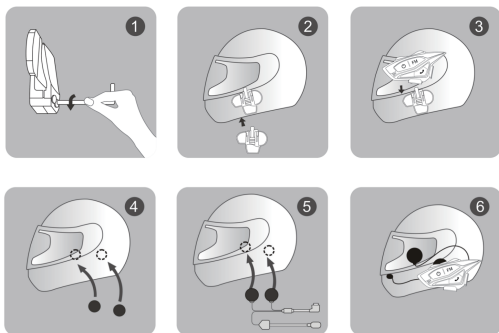
Thank you for choosing RETEVIS EZTalk 3A helmet headset. This is a Motorcycle and bicycle riders; skiers; take-away riders; electric vehicle people;

2.2 Applicable helmets:

Full-face helmets; Open-face helmets; Modular helmets; Off-road helmets; Dual-sport helmets

3.Installation Procedure (one out of two)

3.1 option one: How to install with plastic clamp



① Use the included screwdriver to loosen the screws on the back clip and allow the clip to open to the proper level for easy insertion into the lower edge of the helmet.

② Open the helmet liner, insert the Host back clip into the proper position on the left side of the helmet, and tighten the screw (too tight can also damage the clip or the helmet)

Note: that you need to remove the sponge lining inside the helmet and fix the back clip to the helmet shell.

③ Slide the intercom into the headset clip slot and make sure it locks securely.

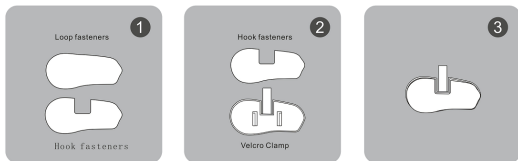
④ Open the helmet liner (ear position), clean the helmet EPS surface, and paste a piece of speaker Velcro on each side (need to install close to the helmet ear position to achieve the best volume and sound).

⑤ Paste the speaker on the surface of the fixed Velcro (the speaker comes with a Velcro hook surface, the speaker with a short line should be installed close to the host side), while fixing the microphone, and properly organize the helmet liner and headphone cable.

⑥ Insert the headset plug into the headset jack of the intercom, bundle the headset cable, and complete the installation.

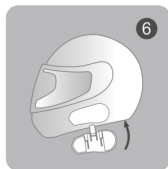
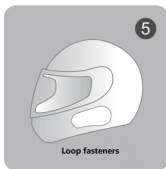
3.2 option 2: How to Install with Velcro clamp

You can directly use the Velcro to mount the device on the edge of the helmet. See the following pictures.

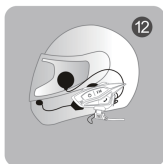
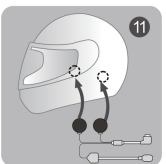
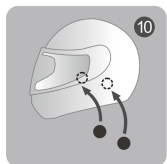
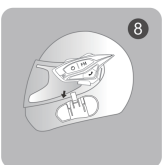


① Separate the hook surface and the rough surface of the Velcro. First, stick the hook surface onto the Velcro clip, then insert the Velcro clip into the host, hold the host in hand, and select the appropriate installation position on the helmet (pay attention to the correct orientation of the unit). After selecting the position, stick the rough surface of the Velcro to the position.

② Remove the Velcro clip (with Velcro hook surface attached) from the host, stick the hook surface to the rough surface of the Velcro, and make sure it is firm.

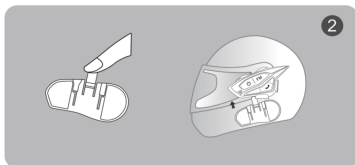
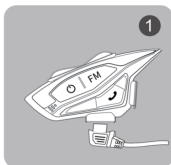


- ③ Slide the intercom host into the slot of the Velcro clip, clamp, and lock it.
- ④ Open the helmet lining (ear position), clean the EPS surface of the helmet, and stick a piece of horn Velcro on the left and right sides (please install near the ear position to achieve the best volume sound effect).
- ⑤ Stick the speaker to the fixed Velcro surface (the speaker has its own Velcro hook surface, and the speaker with a short line should be installed close to the host). At the same time, fix the microphone, and arrange the helmet liner and headphone cable.
- ⑥ Insert the earphone plug into the earphone jack of the intercom, tie up the earphone cable, and complete the installation.



3.3 Quickly remove the intercom from the helmet

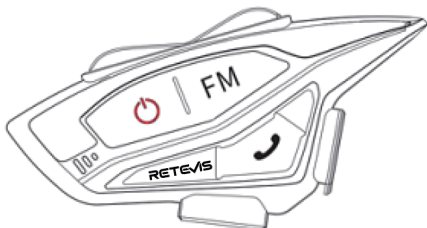
First, unplug the headset cable, and then a finger press the middle of the back clip fixed snap (push to the side of the helmet), so that the back clip snap hook and intercom disengage, while pushing up the intercom, so that it smoothly slides out of the back clip, complete the disassembly.



4. Main Functions and Operations

4.1 Power on / off

First, unplug the headset cable, and then a finger press the middle of the back clip fixed snap (push to the side of the helmet), so that the back clip snap hook and intercom disengage, while pushing up the intercom, so that it smoothly slides out of the back clip, complete the disassembly.



Power on: Press the [on/off] key for 2 seconds. When hearing the power-on prompt, and the indicator flashes red and blue alternately, the headset turns on (if connected to the intercom, the indicator will flash blue slowly);

Power off: Press the [on/off] for 4 seconds. When hearing the power-off prompt, and the indicator flashes red for 1 second, the headset turns off.

4.2 MOBILE PHONE CALL MAKING AND ANSWERING

① Answer the call: when there is an incoming call, shortly press the [📞] key to answer the call.

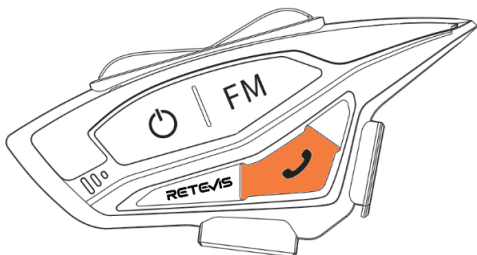
② Automatic answer: when an incoming call rings for 8 seconds without any operation, the Bluetooth intercom will automatically answer the call.

③ Reject the call: Press the [📞] key for 2 seconds. When you hear an incoming call ring to reject the call.

④ End call: During a call, shortly press the [📞] key to end the call.

⑤ Redial the last number: In standby mode, quickly double-click the [on/off] key to automatically dial one of the last numbers dialed.

⑥ Cancel auto-answer:



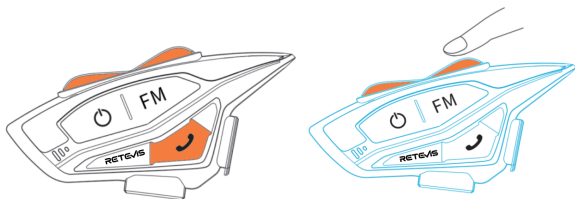
If you do not need the auto-answer function, When not connected to Bluetooth,you can double-click press the[on/off] key to cancel or open the auto-answer function (the initial state of the default auto-answer);(Indicator status: flashing blue light two times to open auto-answer, and flashing red light two times to close auto-answer.)

4.3 Music control

Play/pause: in connection mode, press the [📞] key once to control the music play/pause;

Forward: Pressing the volume up button once to select the next song.

Reverse: Pressing the volume down button once to return to the previous music.



4.4 Volume Adjustment

Long press the volume up key to increase the volume, and long press the volume down key to decrease the volume.

Note: Volume adjustment is subject to what you want; the highest volume has an alarm tone prompt.

4.5 FM Radio Control

- ① Turn on the radio: In standby mode, double click the **[FM]** key to start the FM radio.
- ② After turning on the FM radio, each time you press the volume up or decrease key, you can tune the station to select the station (Note: often press the volume up/decrease key without letting go to enter the volume adjustment mode, at this time you can increase the volume or decrease the volume).
- ③ Turn off the radio: Double click the **[FM]** key. The headset will switch back to the previous state.

Note :

1. When the indoor signal is weak, to make the FM radio work best, you can try to turn on the FM radio near the window or in the open area outside;
2. In the radio mode, when there is a call, the headset will automatically disconnect the radio, connect the mobile phone, and automatically restore the radio status when the call ends.

4.6 Language Tone Switching

The device has multi-language voice prompts. (English, French, German) In the power-on state, press the **[on/off]** + **[volume up/down]** keys to switch the language prompt, each operation switches to the next language and can be operated in a cycle.

4.7 Wake up the voice assistant

Wake up the voice assistant on your phone using the "EZTalk 3A". After connecting to the mobile phone, long press the **[👉]** key to wake up the mobile phone's smart voice assistant and give instructions through the microphone.

4.8 Music sharing

When the "A" host is connected to the mobile phone, the "A" host will then perform intercom pairing with the "B" host. After the intercom pairing is successful. The "A" host switches to music mode and plays music. Long press the **[👉]** of the "A" host. When you hear the Voice prompts, the sharing is successful.

5 Mobile Phone Pairing

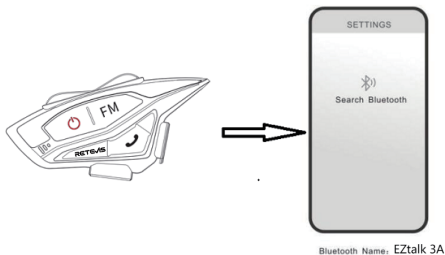
Place the device and the phone within a distance of 1 meter in between.

5.1 Pairing mobile phone [method 1]:

- (1) Turn on Bluetooth: In the off state, long press the **[on/off]** key for 2 seconds, until the red and blue lights alternately flash, and enter the Bluetooth waiting connection state; if other devices have been connected, they will enter the blue light slow flash, please reset and turn on the phone again.
- (2) Search phone Bluetooth: In the state of alternating red and blue lights,

open the phone Bluetooth settings, search for nearby Bluetooth devices, and select "EZTalk 3A" connection pairing, pairing success will be accompanied by a beep "Bluetooth is connected", connected to Bluetooth successfully.

Note: If the device has a pairing record with the phone, the device will automatically connect to the phone Bluetooth again, no need to repeat the pairing (provided that the phone Bluetooth is open).



Pairing mobile phone [method 2]:

After power on, in the standby state (blue light blinking), you can also press and hold the [on/off] + [📞] for 2 seconds, until the red and blue lights alternately blink, enter the Bluetooth waiting pairing state, the phone search for the device Bluetooth name "EZTalk 3A", click connect to complete the pairing.

If pairing can not succeed in 120 seconds, you must use Bluetooth to connect your devices to your phone again.

5.2 INTERCOM PAIRING

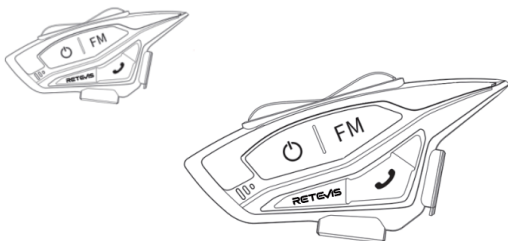
Place two Bluetooth intercoms of the same model within 1 meter of each other.

Pairing steps:

(1) Turn on the two Bluetooth intercoms (A, B), AB needs to enter the Bluetooth waiting pairing state at the same time, and red and blue lights flashes alternately.

(2) Shortly press the A intercom [on/off], A flashes blue light fast, and enters the intercom search mode; after successful connection, AB blue light flashes slowly, and there will be intercom has been connected to the beep.

Note: If the Bluetooth intercom (A, B) has been connected to other Bluetooth devices, the indicator light will slowly flashes blue, you need to first long press [on/off] + [📞] key for 2 seconds, until the red and blue lights alternately flashes, into the waiting for the pairing state before the next pairing operation.



Attention.

- (a) Two Bluetooth headsets in the intercom pairing success, no need to repeatedly pair, turn off the phone and then turn it on again, intercom automatically connected.
- (b) If the first pairing intercom is successful, but not connected to the phone Bluetooth, long press the [on/off] + [📞] key for 2 seconds to enter the Bluetooth search for pairing phone Bluetooth, complete the phone Bluetooth connection.
- (c) In the intercom process, environmental factors inevitably disconnected, disconnected within 10 minutes will be automatically connected back to the function, such as beyond the automatic back to the time, manually long press the [on/off] key once again back to the intercom.
- (d) When talking to each other, long press the [on/off] key to terminate the conversation, and long press it again to connect back to the conversation.

5.3 Multi-mode intelligent mixed use

- ① When in a two-person intercom, you can disconnect the intercom by long-pressing the [on/off] key for 2 seconds, and then short-press the [on/off] key for phone music playback (already connected to the phone Bluetooth), or long-press the [FM] key for 2 seconds to open the FM radio.
- ② When in music mode/FM radio mode, long press the [on/off] key for 2 seconds to resume intercom, and directly switch to two-person intercom mode.
- ③ When the device is in intercom, and the intercom is also connected to the phone state, when a call comes in, the intercom will automatically disconnect, switch to answer the call, and automatically resume intercom after the end of the call; it takes about 2 seconds to automatically switch back to the intercom state from the phone call state.

Work priority order in multiple modes: Phone > Intercom > Music > FM

5.4 Pairing with third-party Bluetooth headsets

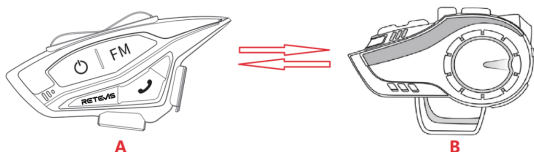
This pairing function only supports the use of two different brand models, placing the two helmet Bluetooth intercoms within 1 meter of each other.

Pairing steps:

(a) Power on: Long press the EZTalk 3A intercom **[on/off]** key for 2 seconds to hear the power-on tone, red and blue lights flash alternately, the headset enters Bluetooth search mode.

(b) Pairing: another headset also enters pairing mode, red and blue lights alternately flash, at this time while shortly pressing the EZTalk 3A **[on/off]** key, blue lights flash, hear the tone pairing search, wait for the connection to be made.

(c) Intercom connection: hear the intercom has been connected to the beep, the two machines flash blue slowly, the connection is successful.



6. Restore Factory Settings

On state Press the **[on/off]** key for 8 seconds, the red light and blue light will be on at the same time, and the shutdown beep will be heard to enter the factory settings.

7. Function Priority Level

Function priority

Level 1: Phone

Level 2: Bluetooth intercom

Level 3: Music/FM radio

Battery and charging instructions

(1) Before using the Bluetooth intercom, please use the original charging cable to charge the intercom, the small TYPE-C charging interface connects to the USB charging port of the Bluetooth intercom, and the large USB port connects to the following charging port for the power supply:

A. the USB port of the computer.

B. A mobile power supply whose output is DC 5V.

C. USB power adapter whose output is DC 5V.

(2) When charging, the red LED is always on, and when fully charged, the red light slowly goes out. It takes about 2 hours to fully charged.

Product technical parameters

Working distance	1000m for two people, (under ideal environment)
Working frequency:	2400-2483.5 MHz
Power	Max 10mW
Bluetooth version	Bluetooth 5.1
Support Bluetooth protocol	A2DP and AVRCP
Operating range	up to 10 meters for phones
Battery type	900mAh rechargeable lithium polymer
Standby time	up to 500 hours (All claims depend on configuration and many other factors; actual results will vary)
Talk time	up to 28 hours for cell phone calls/intercom; up to 33 hours for music
Charging time	about 2 hours
Power adapter	DC 5V 1A (optional)
Charging interface	TYPE-C interface
Operating temperature	41F-104F (5°C-40°C)
Storage temperature	-4F-122F (-20°C~50°C)

Cautions

①When the intercom is not connected to any device for 30 minutes, it automatically shuts down. If up to a month or more without Bluetooth intercom, to protect the intercom lithium battery, please charge the headset once every two months.

②The applicable storage temperature of this product is -20°C to 50°C, please do not put it in an environment where the temperature is too high or too low, otherwise it will affect the service life of the product.

③ To avoid explosion, do not expose the product to an open flame place.

④Bluetooth intercoms are not open, so as not to short-circuit the motherboard or battery damage, affecting normal use, must pay attention.

⑤USB emergency shutdown: Bluetooth intercom in the work of any mode state if directly inserted into the USB charging will emergency shutdown, USB emergency shutdown will not save the recorded data, it is recommended that users do not use it in non-emergency situations.national and international standards.

User' instructions should accompany the device when transferred to other users.

Warnings

1. Notice

RF ENERGY EXPOSURE AND PRODUCT SAFETY GUIDE FOR TWO-WAY RADIOS

Before using this device, please read this guide which contains important operating instructions for safe usage, control information and operational instructions for compliance with RF Energy Exposure limits in applicable national and international standards.

User' instructions should accompany the device when transferred to other users.

2. Unauthorized modification and adjustment

Changes or modifications not expressly approved by the party responsible for compliance may void the user's authority granted by the local government radio management departments to operate this radio and should not be made. To comply with the corresponding requirements, transmitter adjustments should be made only by or under the supervision of a person certified as technically qualified to perform transmitter maintenance and repairs in the private land mobile and fixed services as certified by an organization representative of the user of those services. Replacement of any transmitter component (crystal, semiconductor, etc.) not authorized by the local government radio management departments equipment authorization for this radio could violate the rules.

3. Radio License

Governments keep the radios in classification. Two-way radios are only operated on authorized radio frequencies that are regulated by the local radio management departments (such as FCC, ISED, OFCOM, ANFR, BFTK, Bundesnetzagentur, and so on.). The detailed classification and the use of your two-way radios, please contact the local government radio management departments. Use of this radio outside the country where it was intended to be distributed is subject to government regulations and may be prohibited.

4. FCC Requirements

4.1 This device complies with part 15 of the FCC Rules. Operation is subject to the following two conditions: (Other devices are applicable)

(1) This device may not cause harmful interference.

(2) This device must accept any interference received, including interference that may cause undesired operation.

4.2 Note: This equipment has been tested and found to comply with the limits for a Class B digital device. These limits are designed to provide reasonable protection against harmful interference in a residential installation. This equipment generates, uses and can radiate radio frequency energy and, if not installed and used in accordance with the instructions, may cause harmful interference to radio communications.

particular installation. If this equipment does cause harmful interference to
However, there is no guarantee that interference will not occur in a radio or
television reception, which can be determined by turning the equipment off
and on, the user is encouraged to try to correct the interference by one or
more of the following measures:

- Reorient or relocate the receiving antenna.
- Increase the separation between the equipment and receiver.
- Connect the equipment into an outlet on a circuit different from that to which the receiver is connected.
- Consult the dealer or an experienced radio/TV technician for help.

5. IC Requirements:

Licence-exempt radio apparatus

This device contains licence-exempt transmitter(s)/receiver(s) that comply with Innovation, Science and Economic Development Canada's licence-exempt RSS(s). Operation is subject to the following two conditions:

- (1) This device may not cause interference.
- (2) This device must accept any interference, including interference that may cause undesired operation of the device.

6. CE Requirements:

● (Simple EU declaration of conformity) Shenzhen Retevis Technology Co., Ltd. declares that the radio equipment type is in compliance with the essential requirements and other relevant provisions of RED Directive 2014/53/EU and the ROHS Directive 2011/65/EU and the WEEE Directive 2012/19/EU; the full text of the EU declaration of conformity is available at the following internet address: www.retevis.com.

6.1 Disposal

The crossed-out wheeled-bin symbol on your product, literature, or packaging reminds you that all electrical and electronic products, batteries, or accumulators must be taken to designated collection locations at the end of their working life. Do not dispose of these products as unsorted municipal waste. Dispose of them according to the laws and rules in your area.



7. RF Safety

This two-way radio uses electromagnetic energy in the radio frequency (RF) spectrum to provide communications between two or more users over a distance. RF energy, which when used improperly, can cause biological damage. Please refer to the following websites for more information on what RF energy exposure is and how to control your exposure to assure compliance with established RF exposure limits: <http://www.who.int/en/>

Transmit no more than the rated duty factor 50% of the time. Transmitting necessary information or less, is important because the radio generates

measurable RF energy exposure only when transmitting in terms of measuring for standards compliance. For users who wish to further reduce their exposure, some effective measures to reduce RF exposure include:

- Reduce the amount of time spent using your wireless device.
- Use a speakerphone, earpiece, headset, or other hands-free accessory to reduce proximity to the head (and thus head exposure). While wired earpieces may conduct some energy to the head and wireless earpieces also emit a small amount of RF energy, both wired and wireless earpieces remove the greatest source of RF energy (handheld device) from proximity to the head and thus can greatly reduce total exposure to the head.
- Increase the distance between wireless devices and your body.

7.1

This radio is designed for and classified as “General population/uncontrolled use”. General population/uncontrolled environments are defined as locations where there is exposure of individuals who have no knowledge or control of RF exposure level.



8.

Persons with pacemakers, implantable cardioverter defibrillators (ICDs) or other active implantable medical devices should:

- Consult with their physicians regarding the potential risk of interference from radio frequency transmitters, such as portable radios (poorly shielded medical devices may be more susceptible to interference).
- Turn the radio OFF immediately if there is any reason to suspect that interference is taking place.
- Do not carry the radio in a chest pocket or near the implantation site, and carry or use the radio on the opposite side of the body from the implantable device to minimize the potential for interference.

Hearing Aids: Some digital wireless radios may interfere with some hearing aids. In the event of such interference, you may want to consult your hearing aid manufacturer to discuss alternatives.

Other Medical Devices: If you use any other personal medical device, consult the manufacturer of your device to determine if it is adequately shielded from RF energy. Your physician may be able to assist you in obtaining this information.

9. Turn off your radio in the following conditions:

- Turn off your radio prior to entering any area with a potentially hazardous or explosive atmosphere. Only radio types that are especially qualified should be used in such areas as “Intrinsically Safe”.

Note: the areas with potentially explosive atmosphere referred to above include blasting caps, blasting areas, inflammable gas, dust particles, metallic powders, grain powders, fueling areas such as below decks on boats, fuel or chemical transfer or storage facilities, areas where the air contains

chemicals or particles (such as grain, dust or metal powders) and any other area where you would normally be advised to turn off your vehicle engine. Areas with potentially explosive atmospheres are often – but not always posted.

- Turn off your radio when taking on fuel or parked at gasoline service stations.
- Turn off your radio when on board an aircraft. Any use of a radio must be in accordance with applicable regulations per airline crew instructions.
- Do not use any radio that has a damaged antenna. If a damaged antenna comes into contact with the skin when the radio is in use, a burn can result.
- Turn off your radio before removing or installing accessories.
- When the transceiver is used for long transmissions, the radiator and chassis will become hot.



9.1 Use of Communication Devices While Driving

- Always check the laws and regulations on the use of radios in the areas where you drive. Use of Communication Devices, for example, mobile radio, may not be allowed.



- Give full attention to driving and to the road.
- Use hands-free operation, if available.
- Pull off the road and park before making or answering a call, if driving conditions or regulations so require.
- Do not place a portable radio in the area over an air bag or in the airbag deployment area. The radio may be propelled with great force and cause serious injury to occupants of the vehicle when the airbag inflates.

10. Protect your hearing

- Use the lowest volume necessary to do your job. Turn up the volume only if you are in noisy surroundings.
- Limit the amount of time you use headsets or earpieces at high volume.
- When using the radio without a headset or earpiece, do not place the radio's speaker directly against your ear.
- Use carefully with the earphone maybe possible excessive sound pressure from earphones and headphones can cause hearing loss.

CAUTION: Exposure to loud noises from any source for extended periods of time may temporarily or permanently affect your hearing. The louder the radio's volume, the less time is required before your hearing could be affected. Hearing damage from loud noise is sometimes undetectable at first and can have a cumulative effect.



11.

WARNING:CHOKING HAZARD–Small Parts. Not suitable for children under 3 years old.



12.

The plug of the adapter is considered a disconnect device. The socket-outlet shall be installed near the equipment and shall be easily accessible.

12.1

- Contact Retevis for assistance regarding repairs and service
- For a list of Retevis-approved accessories for your radio model, visit the website: <http://www.Retevis.com>

Guarantee

Model Number: _____

Serial Number: _____

Purchasing Date: _____

Dealer: _____ Telephone: _____

User's Name: _____ Telephone: _____

Country: _____ Address: _____

Post Code: _____ Email: _____

Remarks:

- 1.This guarantee card should be kept by the user, no replacement if lost.
 - 2.Most new products carry a two-year manufacturer's warranty from the date of purchase.
 - 3.The user can get warranty and after-sales service as below:
 - Contact the seller where you buy.
 - Products Repaired by Our Local Repair Center
 - 4.For warranty service, you will need to provide a receipt proof of purchase from the actual seller for verification
- Exclusions from Warranty Coverage:
- 1.To any product damaged by accident.
 - 2.In the event of misuse or abuse of the product or as a result of unauthorized alterations or repairs.
 - 3.If the serial number has been altered, defaced, or removed.



Shenzhen Retevis Technology Co.,Ltd.

7/F, 13-C, Zhonghaixin Science&Technology Park, No.12 Ganli
6th Road, Jihua Street, Longgang District, Shenzhen, China

Web:www.retevis.com

E-mail:info@retevis.com

Facebook:www.facebook.com/retevis.fans