

US

RT628B

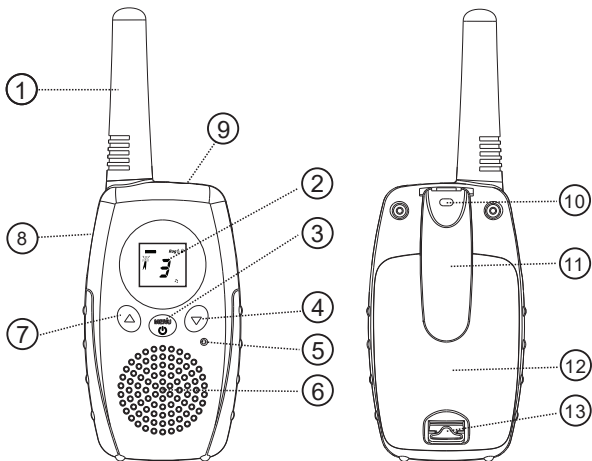
Walkie Talkie

User's Guide



CAUTION

Read this operating instruction carefully before using your two way radio, including the part on Product Safety and Important Notice.



1. Antenna
2. Backlit LCD Display
3. Menu/Power Button
4. Down Button
5. Microphone
6. Speaker
7. Up Button
8. PTT(Pu sh to talk) Button

9. External Speaker/
Microphone/Charge Jack
10. Wrist Strap Connection
11. Belt Clip
12. Battery Compartment
13. Battery Door Latch

Product Featurese

Channel	Frequency(Mhz)	DCS
1	462.5625	D306N
2	462.5875	D039N
3	462.6125	D040N

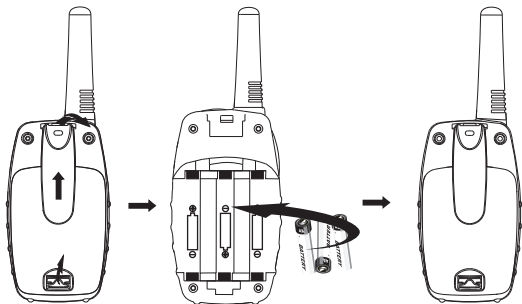
Installing Batteries

To install or replace batteries:

1. Remove the belt clip by pulling the tab and sliding it up.
2. Pull the battery door lock tab up to release the battery cover. Insert 3 "AA" batteries.
3. Put the battery cover back into place. Snap the lock tab and belt clip back into place.



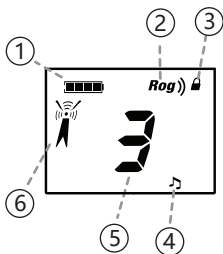
1. Do not mix old and new batteries
2. Do not mix alkaline, standard (carbon-zinc) or rechargeable (nickel-cadmium) batteries.



Features

- 3 Channels
(Three shared with GMRS)
- 1 Privacy Codes
- Backlit LCD Display
- Button Lock
- Speaker/Microphone/
Jack/Charge Jack
- Roger Beep
Selectable On/Off
- Battery/Power Saver
- Keystroke Tones
- Battery Level Indicator
- Low Battery Audible Alert
- Auto Squelch
- Belt Clip

Backlit LCD Display



1. Battery Level Indicator
2. Roger Beep Icon
3. Lock Icon
4. Key Tone Icon
5. Channel Numbers
6. Receive/Transmit Icon



The maximum range may vary and is based on unobstructed line-of-sight communication under ideal conditions.



Quick Start

1. Press and hold the Menu/Power button to turn on your radio.
2. Press the Menu, Press the Up or Down button to select a channel.



Both radios must be tuned to the same channel/privacy code to communicate.

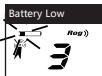
3. Press and hold the PTT button while speaking into the microphone.
4. When finished talking, release the PTT button and listen for a response.

Turning on Your Radio



Press and hold the Menu/Power button until you hear a series of audible tones indicating the radio is on. Your radio is now in Standby mode, ready to receive transmissions. The radio is always in Standby mode except when the PTT, or Menu/Power buttons are pressed.

Battery Low



When battery power is low, the final bar in the Battery Low icon will blink and an audible tone will sound twice before the radio shuts off. Your batteries should be replaced or recharged if using rechargeable batteries.



The radio will display flashing battery icon while charging.

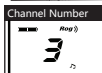
If there are no transmissions within 3 seconds, the radio will automatically switch to Battery Saver mode and the Power Saver icon will display. This will not affect the radio's ability to receive incoming transmissions.

Communicating with Another Person



1. Press and hold the PTT button.
 2. With the microphone about one inch (2.5cm) from your mouth, speak in a normal voice.
 3. Release the PTT button when you are finished talking and listen for a response.
- You cannot receive incoming calls while pressing the PTT button.
Both radios must be tuned to the same channel/privacy code to communicate.

To Select a Channel



With the radio on, select any of the 3 channels by pressing Menu and the Up or Down button. Both radios must be tuned to the same channel to communicate. Channels 1 through 3 are shared with GMRS.

Listening for a Response



Release the PTT button to receive incoming transmissions. Your radio is always in Standby mode while the PTT buttons are not pressed.

To Adjust Volume



Press the Up or Down button at the standby mode. A double beep sound is used to indicate the minimum and maximum volume levels (1 through 8).

Lock Function



The Lock function locks the Up, Down and Menu/Power buttons to prevent accidental operation. To turn the lock on or off:

- Press and hold the Up button for two seconds.

A double beep sound is used to confirm your lock on or off request. When in Lock mode, the Lock icon will be displayed.

Scrolling Through the Menu Function

By scrolling through the MENU function, you will be able to select or turn on the preferred features of your radio. When scrolling through the Menu function, your radio features will be displayed in the same predetermined order:

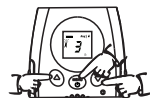


Set channels

Set Roger Beep/Key Tones On/Off

Roger Beep Confirmation Tone and Key Tone On/Off

Your listener will hear an audible tone when you release the PTT button. This alerts the other party that you are finished talking and it is OK for them to speak. When Key Tone is On, an audible tone will sound each time a button is pressed.



Roger Beep On



Roger Beep Off



To turn roger beep on or off:

1. Press the Menu button until the Roger Beep/Key Tone icon is displayed. The current on or off setting flashes.
2. Press the Up or Down button to select the roger beep/Key Tone on or off.
3. Choose one of the following:
 - a. Press the PTT button to return to Standby mode.

RF ENERGY EXPOSURE AND PRODUCT SAFETY GUIDE FOR PORTABLE TWO-WAY RADIOS



ATTENTION!

Before using this radio, read this guide which contains important operating instructions for safe usage and rf energy awareness and control for compliance with applicable standards and regulations.

This two-way radio uses electromagnetic energy in the radio frequency (RF) spectrum to provide communications between two or more users over a distance. RF energy, which when used improperly, can cause biological damage.

All Retevis two-way radios are designed, manufactured, and tested to ensure they meet government-established RF exposure levels. In addition, manufacturers also recommend specific operating instructions to users of two-way radios. These instructions are important because they inform users about RF energy exposure and provide simple procedures on how to control it.

Please refer to the following websites for more information on what RF energy exposure is and how to control your exposure to assure compliance with established RF exposure limits: <http://www.who.int/en/>

Local Government Regulations

When two-way radios are used as a consequence of employment, the Local Government Regulations requires users to be fully aware of and able to control their exposure to meet occupational requirements. Exposure awareness can be facilitated by the use of a product label directing users to specific user awareness information. Your Retevis two-way radio has a RF Exposure Product Label. Also, your Retevis user manual, or separate safety booklet includes information and operating instructions required to control your RF exposure and to satisfy compliance requirements.

Radio License

Governments keep the radios in classification, business two-way radios operate on radio frequencies that are regulated by the local radio management departments (FCC, ISED, OFCOM, ANFR, BFTK, Bundesnetzagentur...). To transmit on these frequencies, you are required to have a license issued by them. The detailed classification and the use of your two radios, please contact the local government radio management departments.

Use of this radio outside the country where it was intended to be distributed is subject to government regulations and may be prohibited.

Unauthorized modification and adjustment

Changes or modifications not expressly approved by the party responsible for compliance may void the user's authority granted by the local government radio management departments to operate this radio and should not be made. To comply with the corresponding requirements,

transmitter adjustments should be made only by or under the supervision of a person certified as technically qualified to perform transmitter maintenance and repairs in the private land mobile and fixed services as certified by an organization representative of the user of those services.

Replacement of any transmitter component (crystal, semiconductor, etc.) not authorized by the local government radio management departments equipment authorization for this radio could violate the rules.

FCC Requirements:

This device complies with part 15 of the FCC Rules. Operation is subject to the condition that this device does not cause harmful interference. (Licensed radios are applicable);

This device complies with part 15 of the FCC Rules. Operation is subject to the following two conditions: (Other devices are applicable)

(1) This device may not cause harmful interference, and

(2) this device must accept any interference received, including interference that may cause undesired operation.

NOTE: This equipment has been tested and found to comply with the limits for a Class A digital device, pursuant to part 15 of the FCC Rules. These limits are designed to provide reasonable protection against harmful interference when the equipment is operated in a commercial environment. This equipment generates, uses, and can radiate radio frequency energy and, if not installed and used in accordance with the instruction manual, may cause harmful interference to radio communications. Operation of this equipment in a residential area is likely to cause harmful interference in which case the user will be required to correct the interference at his own expense.

CE Requirements:

•(Simple EU declaration of conformity) Shenzhen Retevis Technology Co., Ltd. declares that the radio equipment type is in compliance with the essential requirements and other relevant provisions of RED Directive 2014/53/EU and the ROHS Directive 2011/65/EU and the WEEE Directive 2012/19/EU; the full text of the EU declaration of conformity is available at the following internet address: www.retevis.com.

•Restriction Information

This product can be used in EU countries and regions, including: Belgium (BE), Bulgaria (BG), Czech Republic (CZ), Denmark (DK), Germany (DE), Estonia (EE), Ireland (IE), Greece (EL), Spain (ES), France (FR), Croatia (HR), Italy (IT), Cyprus (CY), Latvia (LV), Lithuania (LT), Luxembourg (LU), Hungary (HU), Malta (MT), Netherlands (NL), Austria (AT), Poland (PL), Portugal (PT), Romania (RO), Slovenia (SI), Slovakia (SK), Finland (FI), Sweden (SE) and United Kingdom (UK).

For the warning information of the frequency restriction, please refer to the package or manual section.

•Disposal

The crossed-out wheeled-bin symbol on your product, literature, or packaging reminds you that in the European Union, all electrical and electronic products, batteries, and accumulators (rechargeable batteries) must be taken to designated

collection locations at the end of their working life. Do not dispose of these products as unsorted municipal waste. Dispose of them according to the law in your area.



IC Requirements:

Licence-exempt radio apparatus

This device contains licence-exempt transmitter(s)/receiver(s) that comply with Innovation, Science and Economic Development Canada's licence-exempt RSS(s). Operation is subject to the following two conditions:

- (1) This device may not cause interference.
- (2) This device must accept any interference, including interference that may cause undesired operation of the device.

Le présent appareil est conforme aux CNR d'Industrie Canada applicables aux appareils radio exempts de licence. L'exploitation est autorisée aux deux conditions suivantes :

- (1) l'appareil ne doit pas produire de brouillage;
- (2) l'utilisateur de l'appareil doit accepter tout brouillage radioélectrique subi, même si le brouillage est susceptible d'en compromettre le fonctionnement.

RF Exposure Information

- DO NOT operate the radio without a proper antenna attached, as this may damage the radio and may also cause you to exceed RF exposure limits. A proper antenna is the antenna supplied with this radio by the manufacturer or an antenna specifically authorized by the manufacturer for use with this radio, and the antenna gain shall not exceed the specified gain by the manufacturer declared.
- DO NOT transmit for more than 50% of total radio use time, more than 50% of the time can cause RF exposure compliance requirements to be exceeded.
- During transmissions, your radio generates RF energy that can possibly cause interference with other devices or systems. To avoid such interference, turn off the radio in areas where signs are posted to do so.
- DO NOT operate the transmitter in areas that are sensitive to electromagnetic radiation such as hospitals, aircraft, and blasting sites.
- Portable Device, this transmitter may operate with the antenna(s) documented in this filing in Push-to-Talk and body-worn configurations. RF exposure compliance is limited to the specific belt-clip and accessory configurations as documented in this filing and the separation distance between user and the device or its antenna shall be at least 2.5 cm.
- Mobile Device, during operation, the separation distance between user and the antenna subjects to actual regulations, this separation distance will ensure that there is sufficient distance from a properly installed externally-mounted antenna to satisfy the RF exposure requirements.
- Occupational/Controlled Radio, this radio is designed for and classified as "Occupational/Controlled Use Only", meaning it must be used only during the course of employment by individuals aware of the hazards, and the ways to minimize such hazards; NOT intended for use in a General population/uncontrolled environment.
- General population/uncontrolled Radio, this radio is designed for and classified as "General population/uncontrolled Use".

RF Exposure Compliance and Control Guidelines and Operating Instructions

To control your exposure and ensure compliance with the occupational/controlled environment exposure limits, always adhere to the following procedures.

Guidelines:

- User awareness instructions should accompany the device when transferred to other users.
- Do not use this device if the operational requirements described herein are not met.

Operating Instructions:

- Transmit no more than the rated duty factor of 50% of the time. To Transmit (Talk), push the Push to Talk (PTT) button. To receive calls (listen), release the PTT button. Transmitting 50% of the time, or less, is important because the radio generates measurable RF energy exposure only when transmitting in terms of measuring for standards compliance.
- Transmit only when people outside the vehicle are at least the recommended minimum lateral distance away from a properly installed according to installation instructions, externally mounted antenna.
- When operating in front of the face, worn on the body, always place the radio in a Retevis approved clip, holder, holster, case, or body harness for this product. Using approved body-worn accessories is important because the use of Non-Retevis approved accessories may result in exposure levels, which exceed the IEEE/ICNIRP RF exposure limits.

Hand-held Mode

- Hold the radio in a vertical position with the microphone (and other parts of the radio including the antenna) at least 2.5 cm (one inch) away from the nose or lips. The antenna should be kept away from the eyes. Keeping the radio at a proper distance is important as RF exposure decreases with increasing distance from the antenna.



Phone Mode

- When placing or receiving a phone call, hold your radio product as you would a wireless telephone. Speak directly into the microphone.

Electromagnetic Interference/Compatibility

NOTE: Nearly every electronic device is susceptible to electromagnetic interference (EMI) if inadequately shielded, designed, or otherwise configured for electromagnetic compatibility.

Avoid Choking Hazard



Small Parts. Not for children under 3 years.

Turn off your radio power in the following conditions:



WARNING

- Turn off your radio before removing (installing) a battery or accessory or when charging battery.
 - Turn off your radio when you are in a potentially hazardous environments: Near electrical blasting caps, in a blasting area, in explosive atmospheres (flammable gas, dust particles, metallic powders, grain powders, etc.).
 - Turn off your radio while taking on fuel or while parked at gasoline service stations.
- To avoid electromagnetic interference and/or compatibility conflicts
- Turn off your radio in any facility where posted notices instruct you to do so, hospitals or health care facilities (Pacemakers, Hearing Aids and Other Medical Devices) may be using equipment that is sensitive to external RF energy.
 - Turn off your radio when on board an aircraft. Any use of a radio must be in accordance with applicable regulations per airline crew instructions.

Protect your hearing:



WARNING

- Use the lowest volume necessary to do your job.
 - Turn up the volume only if you are in noisy surroundings.
 - Turn down the volume before adding headset or earpiece.
 - Limit the amount of time you use headsets or earpieces at high volume.
 - When using the radio without a headset or earpiece, do not place the radio's speaker directly against your ear
 - Use careful with the earphone maybe possible excessive sound pressure from earphones and headphones can cause hearing loss
- Note: Exposure to loud noises from any source for extended periods of time may temporarily or permanently affect your hearing. The louder the radio's volume, the less time is required before your hearing could be affected. Hearing damage from loud noise is sometimes undetectable at first and can have a cumulative effect.



Avoid Burns



WARNING

Antennas

- Do not use any portable radio that has a damaged antenna. If a damaged antenna comes into contact with the skin when the radio is in use, a minor burn can result.

Batteries (If appropriate)

- When the conductive material such as jewelry, keys or chains touch exposed terminals of the batteries, may complete an electrical circuit (short circuit the battery) and become hot to cause bodily injury such as burns. Exercise care in handling any battery, particularly when placing it inside a pocket, purse or other container with metal objects

Long transmission

- When the transceiver is used for long transmissions, the radiator and chassis will become hot.

Safety Operation



WARNING

Forbid

- Do not use charger outdoors or in moist environments, use only in dry locations/conditions.
- Do not disassemble the charger, that may result in risk of electrical shock or fire.
- Do not operate the charger if it has been broken or damaged in any way.
- Do not place a portable radio in the area over an air bag or in the air bag deployment area. The radio may be propelled with great force and cause serious injury to occupants of the vehicle when the air bag inflates.

To reduce risk

- Pull by the plug rather than the cord when disconnecting the charger.
- Unplug the charger from the AC outlet before attempting any maintenance or cleaning.
- Contact Retevis for assistance regarding repairs and service.
- The adapter shall be installed near the equipment and shall be easily accessible

Approved Accessories



WARNING

- This radio meets the RF exposure guidelines when used with the Retevis accessories supplied or designated for the product. Use of other accessories may not ensure compliance with the RF exposure guidelines and may violate regulations.
- For a list of Retevis-approved accessories for your radio model, visit the following website: <http://www.Retevis.com>

Guarantee

Model Number: _____

Serial Number: _____

Purchasing Date: _____

Dealer: _____ Telephone: _____

User's Name: _____ Telephone: _____

Country: _____ Address: _____

Post Code: _____ Email: _____

Remarks:

1.This guarantee card should be kept by the user, no replacement if lost.

2.Most new products carry a two-year manufacturer' s warranty from the date of purchase. Further details, Please Contact Us :

TEL./Whatsapp/Skype: +8615038106642

Email: info@retevistoy.com

Facebook: <https://www.facebook.com/retevistoy.com>

Website: <https://retevistoy.com/>

3.The user can get warranty and after-sales service as below:

- Contact the seller where you buy.
- Products Repaired by Our Local Repair Center

4.For warranty service, you will need to provide a receipt proof of purchase from the actual seller for verification

Exclusions from Warranty Coverage:

1.To any product damaged by accident.

2.In the event of misuse or abuse of the product or as a result of unauthorized alterations or repairs.

3.If the serial number has been altered, defaced, or removed



CE FCC RoHS



Shenzhen Retevis Technology Co.,Ltd.

Add: 7/F, 13-C, Zhonghaixin Science&Technology Park, No.12 Ganli
6th Road, Jihua Street, Longgang District, Shenzhen, China

Web: www.retevistoys.com

E-mail: info@retelvistoys.com

Facebook: facebook.com/retelvistoys



MADE IN CHINA